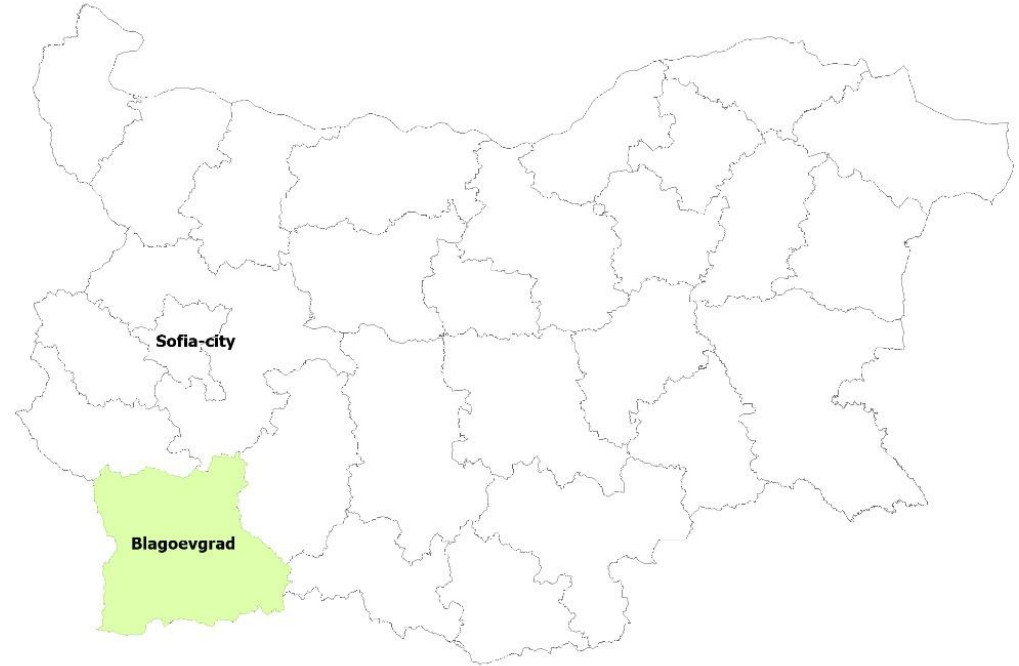
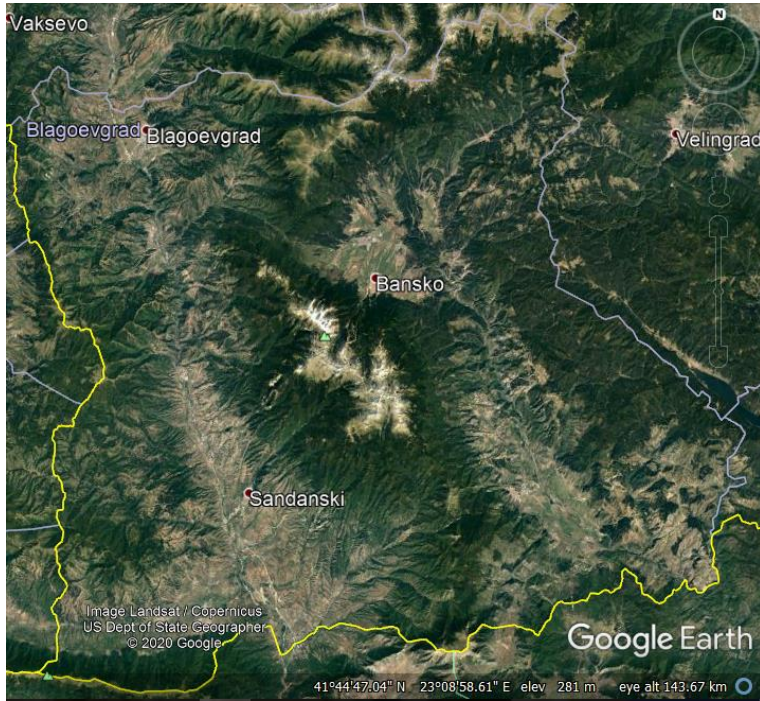


Case Studies

- ▶ **Bulgaria - Blagoevgrad region**
- ▶ Croatia - Kontinentalna Hrvatska
- ▶ Italy - Sicily

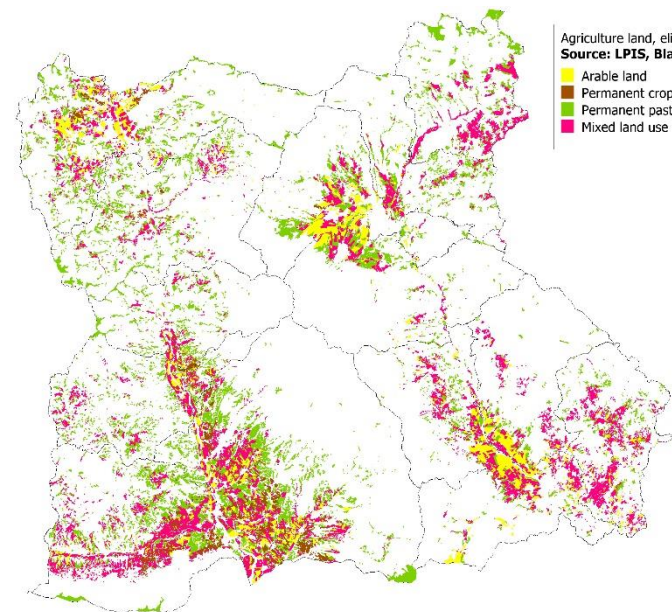
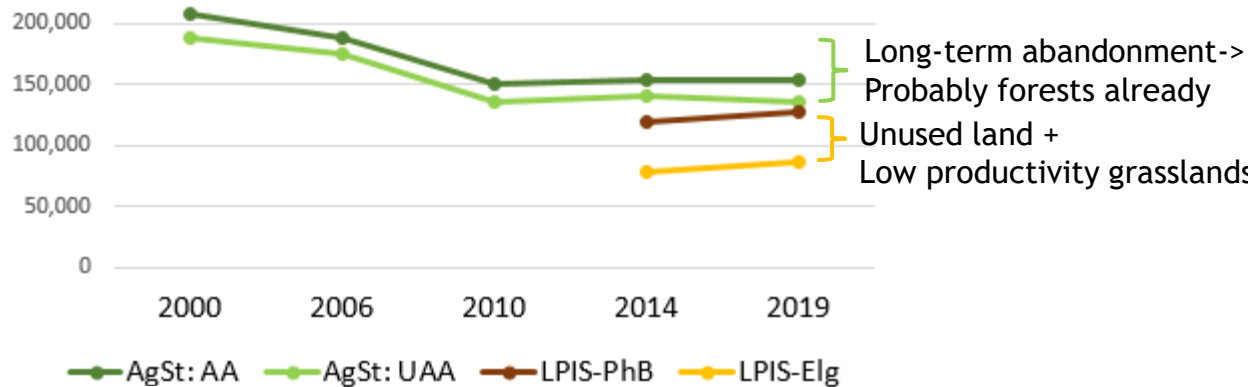
Blagoevgrad region, Bulgaria

Vyara Stefanova, Yanka Kazakova, Boris Lagadinov



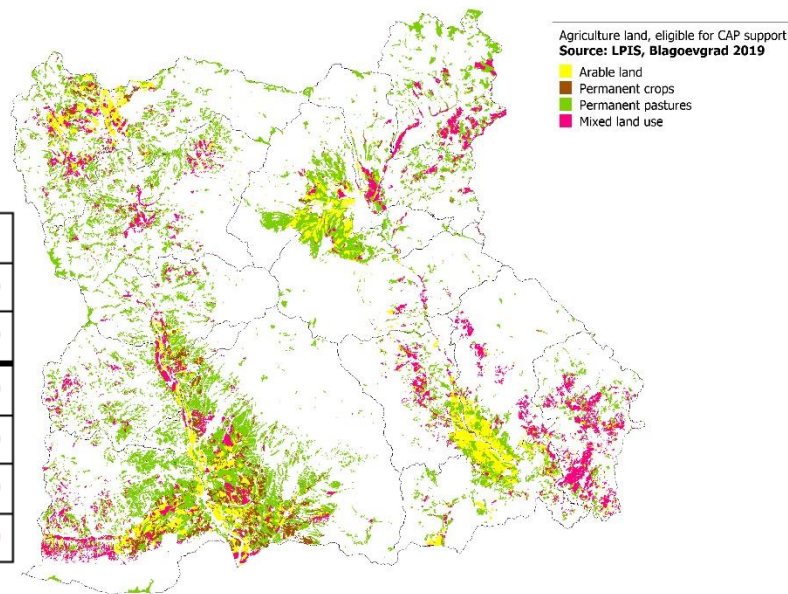
Land use and land abandonment

Agricultural land in the different databases



LPIS Agriculture land (ha) Changes 2014 - 2019

Physical blocks	+6.7%
of which Eligible	+11.7%
Arable	+29.9%
Permanent crops	+15.1%
Permanent pastures	+55.0%
Mixed land use	-41.3%



Key drivers of abandonment

Socio-economic:

- ▶ Depopulation & abandonment of villages
- ▶ + Seasonal farm work abroad
- ▶ + Tourism and other sectors more attractive as working places

Agriculture:

- ▶ Small farm size - av. 1.54ha (natural conditions + land restitution)
- ▶ Land consolidation legislation not working
- ▶ CAP support not stimulating for small farms (area-based + investments)



All photos by Rositsa Dzhambazova, Business Incubator in Goche Delchev, Blagoevgrad region

Bringing land back into production

Challenges

- ▶ Depopulation / ageing / outmigration
- ▶ Lack of basic rural and agricultural infrastructure in the mountains

- ▶ Most land is re-classified as forest
- ▶ Absentee land owners to overcome land fragmentation

- ▶ Adding value to products requires more skills + investments + time than production

Opportunities

- ▶ Active people moving back to villages (+Covid effect)

- ▶ Combination of CAP area-based schemes (SAPS + ANC +AE/N2K)

- ▶ Improve permanent grassland eligibility definition for LPIS

- ▶ Investment support for small scale processing facilities

- ▶ Longer-term lease of municipal grasslands
- ▶ “White spots” legislation

Thank you for your attention!

Contact: Yanka Kazakova

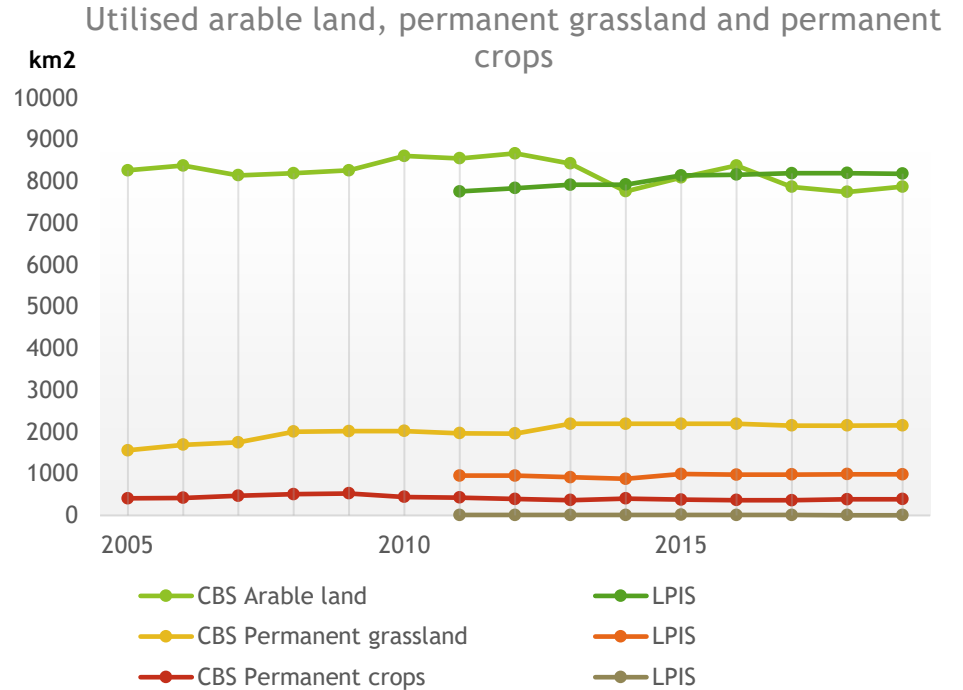
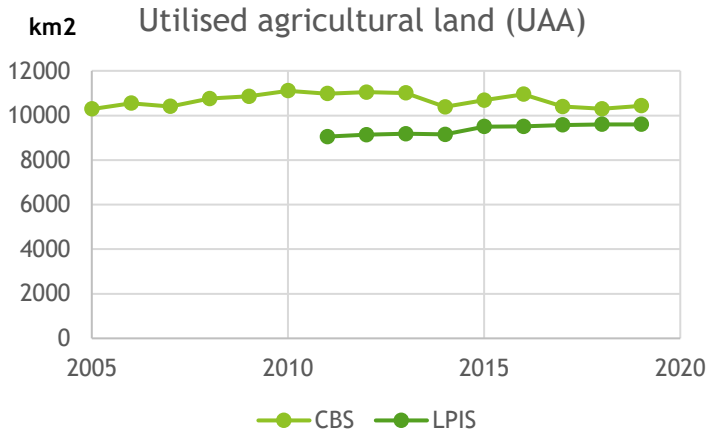
yanka.kazakova@gmail.com



Case Studies

- ▶ Bulgaria - Blagoevgrad region
- ▶ Croatia - Kontinentalna Hrvatska
- ▶ Italy - Sicily

Agricultural land in Kontinentalna Hrvatska



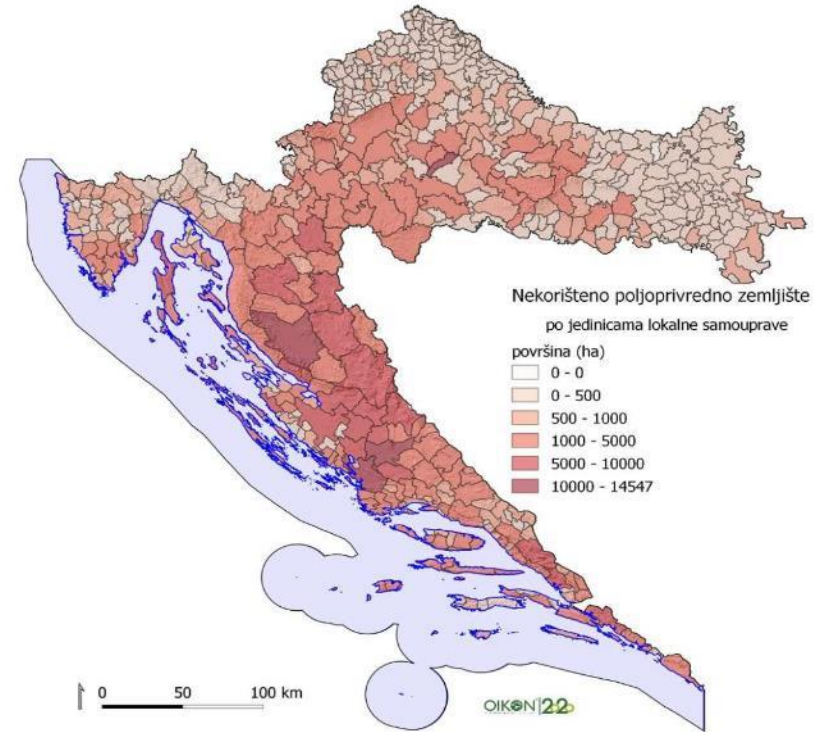
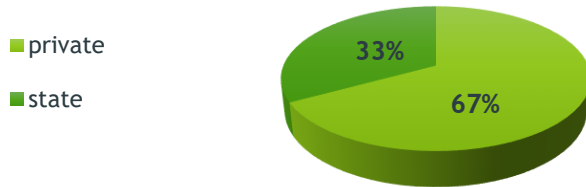
Agricultural land in Kontinentalna Hrvatska

- ▶ Land registry (cadastre) vs. actual use
- ▶ No consensus on total agricultural land

Parliamentary discussion (2018)- 26,950 km²
Spatial development Strategy - 26,599 km²
7th national communication to UNFCCC - 27,000 km²
Strategy for agriculture and fisheries -31,510 km²

Total farmland FAOSTAT - 16,890 km²

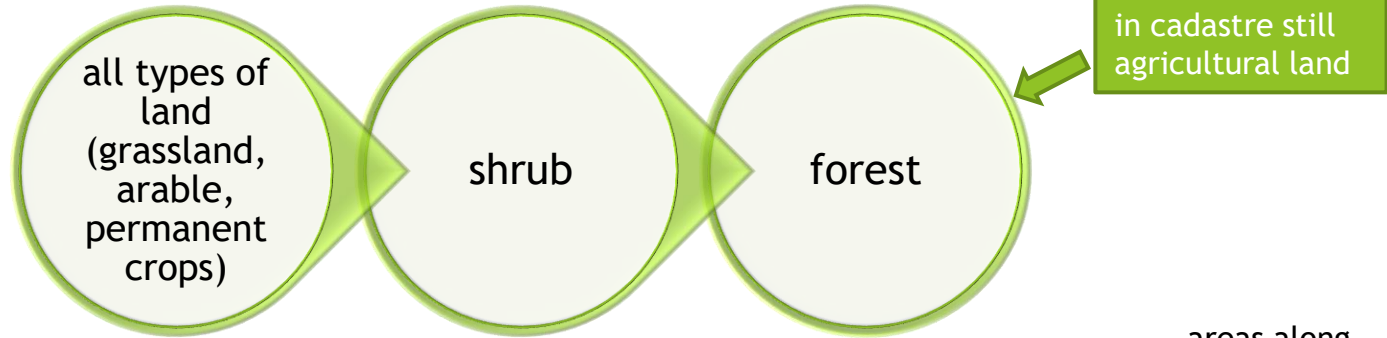
Ownership of agricultural land



Unutilized agricultural land in Croatia within the JLS (Source: OIKON 2020)

Agricultural abandonment in Kontinentalna Hrvatska

What and how?



Where?



...areas along rivers, adjacent to forests, along infrastructure corridors, in the vicinity of urban areas, in areas with population decrease...

Main factor driving changes and abandonment

Past

- Land reform
- Legacy of war (abandonment, land mines...)

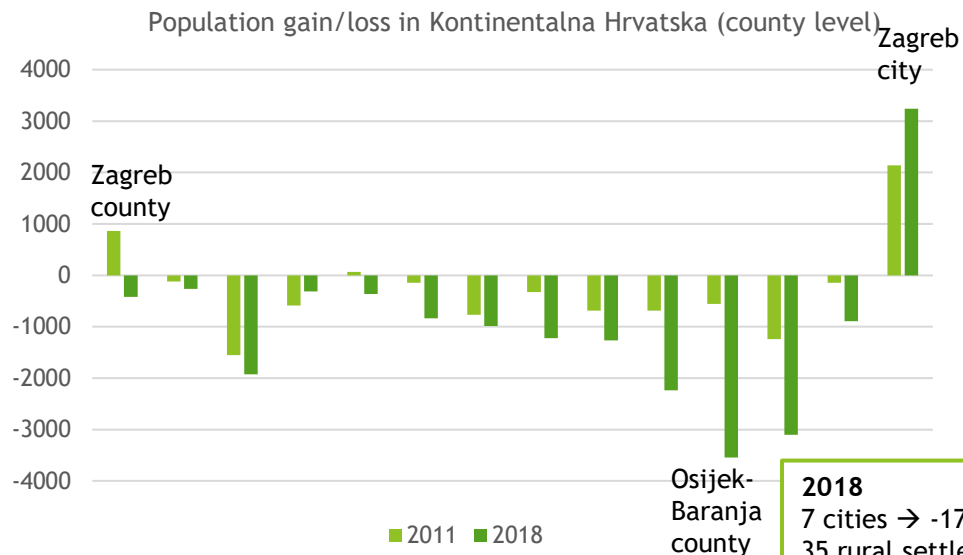
Present

- Rural population decline and ageing
- Low economical profitability of agriculture and high risks
- Land ownership issues and parcellation



Future

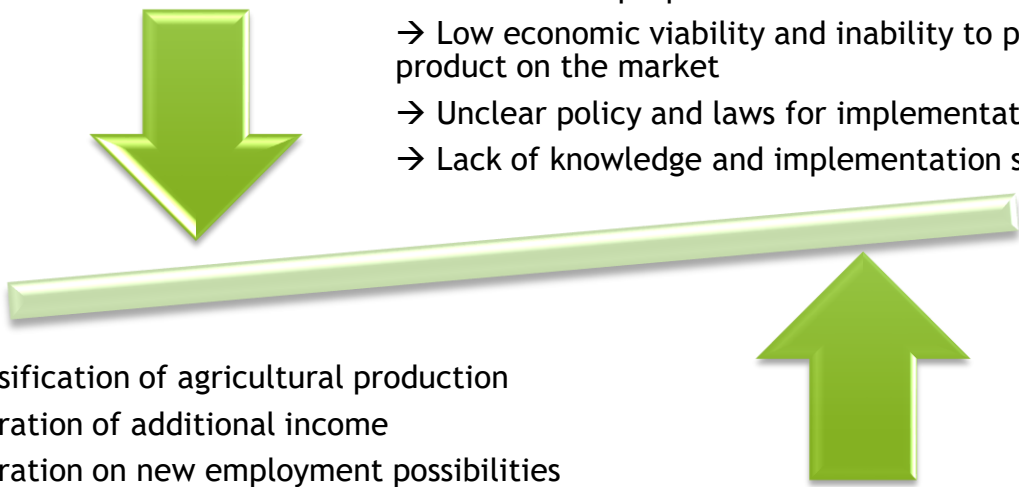
Climate change



2018
7 cities → -1744 inh.
35 rural settlements → -1798 inh.

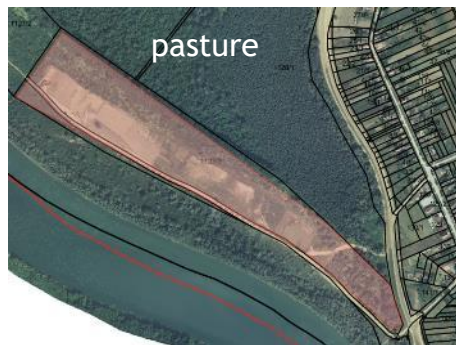
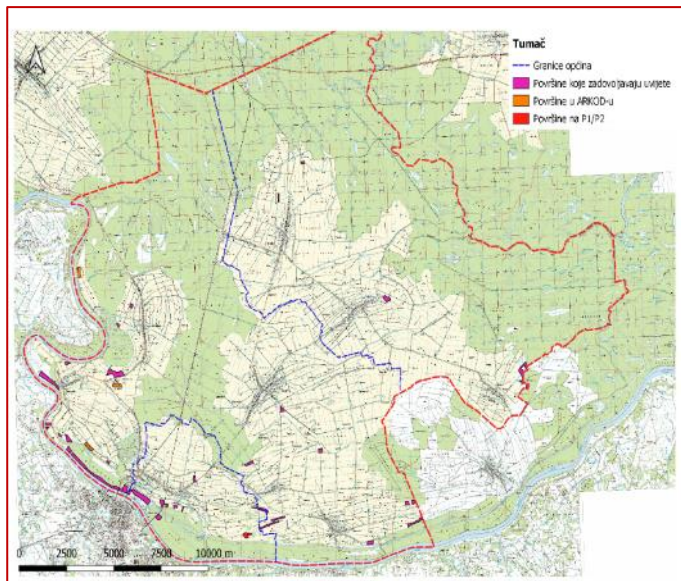
Challenges/opportunities of bringing this land back into production

- Halting depopulation of rural areas
- Competition with other uses (urbanisation, PV, forestry...)
- Cost of land preparation vs. Profit
- Low economic viability and inability to place product on the market
- Unclear policy and laws for implementation
- Lack of knowledge and implementation support

- 
- Diversification of agricultural production
 - Generation of additional income
 - Generation on new employment possibilities
 - Keeping the land in production

Positive example from the field

- ▶ Project: Identification of land suitable for establishment of short rotation coppice, methods for production and technologies for transformation
- ▶ Vukovar-Srijem county - Department for Agriculture



Thank you for your attention!

Contact:

Željka Fištrek & Biljana Kulišić

Energy Institute Hrvoje Požar (EIHP)

Dept. RES, Climate and Environmental Protection, Croatia

zfistrek@eihp.hr & bkulistic@eihp.hr

Case Studies

- ▶ Bulgaria - Blagoevgrad region
- ▶ Croatia - Kontinentalna Hrvatska
- ▶ Italy - Sicily



Source <https://mapswire.com>

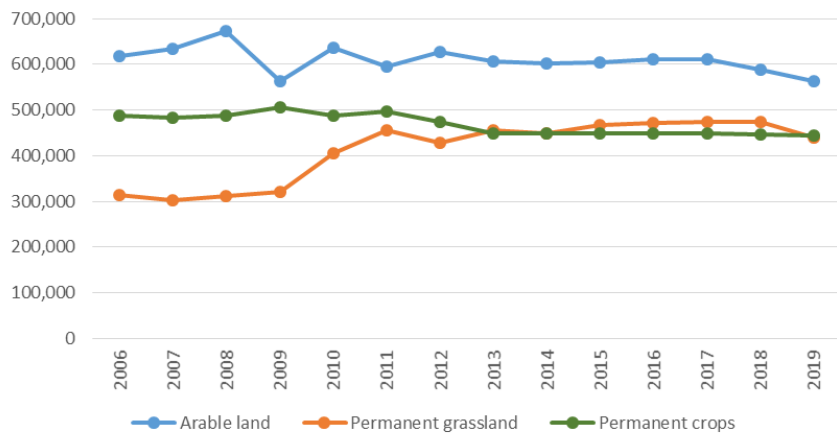


Source <http://www.italymap.it/>

Land use change in Sicily



Agricultural land use



Source of the data: Italian Institute of National Statistics - <https://www.istat.it>

Main causes and consequences of land abandonment

Causes:

- ▶ International competition
- ▶ Poor profitability of smaller plots and marginal land in mountainous areas
- ▶ Land fragmentation
- ▶ Poor infrastructure and inadequate services in inland areas



- ▶ Rural depopulation (especially young people - lack of generational turnover)

Consequences:



Bringing land back into production - opportunities

Renewed interest in the primary sector and rural lifestyle



Source: <https://www.amnotizie.it/>

New interest in organic products and local, high-quality varieties, with lower yields and a premium price



Source: <https://www.siciliaagricoltura>

Policies to bring land back into production

- ▶ Public funds lent to farmers to buy land with very low interest rates
- ▶ Land banks (regional and national)
- ▶ Land associations
- ▶ CAP's agri-environment measures



Agenzia di Sviluppo Locale delle Madois



PRIMO INSEDIAMENTO ISMEA

Domande di partecipazione fino alle ore 12:00 dell' 11 maggio 2018

Riservato ai giovani fra i 18 e i 41 anni non compiuti

ASSOCIAZIONE FONDIARIA
Uno strumento per la gestione comunitaria del bosco

sabato 17 marzo | ore 9.30
Montenars | sala consiliare
incontro pubblico



Illustrazione di Saul Carré
Maggio 2019 Comune di Montenars



Source: <https://www.parcodellemadonie.it>



Source: <https://www.guidasicilia.it>

Thank you for your attention!

Contact: Daniela Russi (IEEP)

drussi@ieep.eu

